

ALS Center Certified Center of Excellence

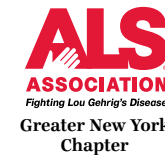
The Mirken Department of Neurology at Mount Sinai Beth Israel treats a wide range of neuromuscular disorders (those conditions that affect the nervous system outside the brain and the spinal cord), with special expertise in amyotrophic lateral sclerosis, often referred to as ALS or Lou Gehrig's Disease. Established in 1996, The ALS Center at Mount Sinai Beth Israel was the first ALS Association Center in Greater New York.

Our multidisciplinary center brings together neurologists, nurses, social workers, physical and occupational therapists, speech therapists, respiratory therapists, nutritionists, and other professionals as needed, to develop a comprehensive, coordinated treatment plan for patients with ALS. Geared toward helping patients live more productively and independently, The ALS Center at Mount Sinai Beth Israel provides a comprehensive assessment, diagnostic and follow-up testing, education and individualized treatment for each patient.

About The ALS Association

The ALS Association's mission is to lead the fight to treat and ultimately cure ALS through global, cutting-edge research and to empower people with Lou Gehrig's Disease and their families to live fuller lives by providing them with compassionate care and support. As one of The ALS Association's leading chapters, the Greater New York Chapter plays a major role in promoting the mission of The ALS Association.

For more information call **212-619-1400**.
Or visit us at **www.ALS-NY.org**



ALS Association Certified Center

Mirken Department of Neurology

Mount Sinai Beth Israel Phillips Ambulatory Care Center

10 Union Square East, 5th Floor
Suite 5D
New York, NY 10003
212-844-6188

Transportation and Parking

By Car

Phillips Ambulatory Care Center (PACC) is located on Union Square East and 14th Street in Manhattan.

There is a parking garage under PACC, entrance on 15th Street, between Union Square East and Irving Place.

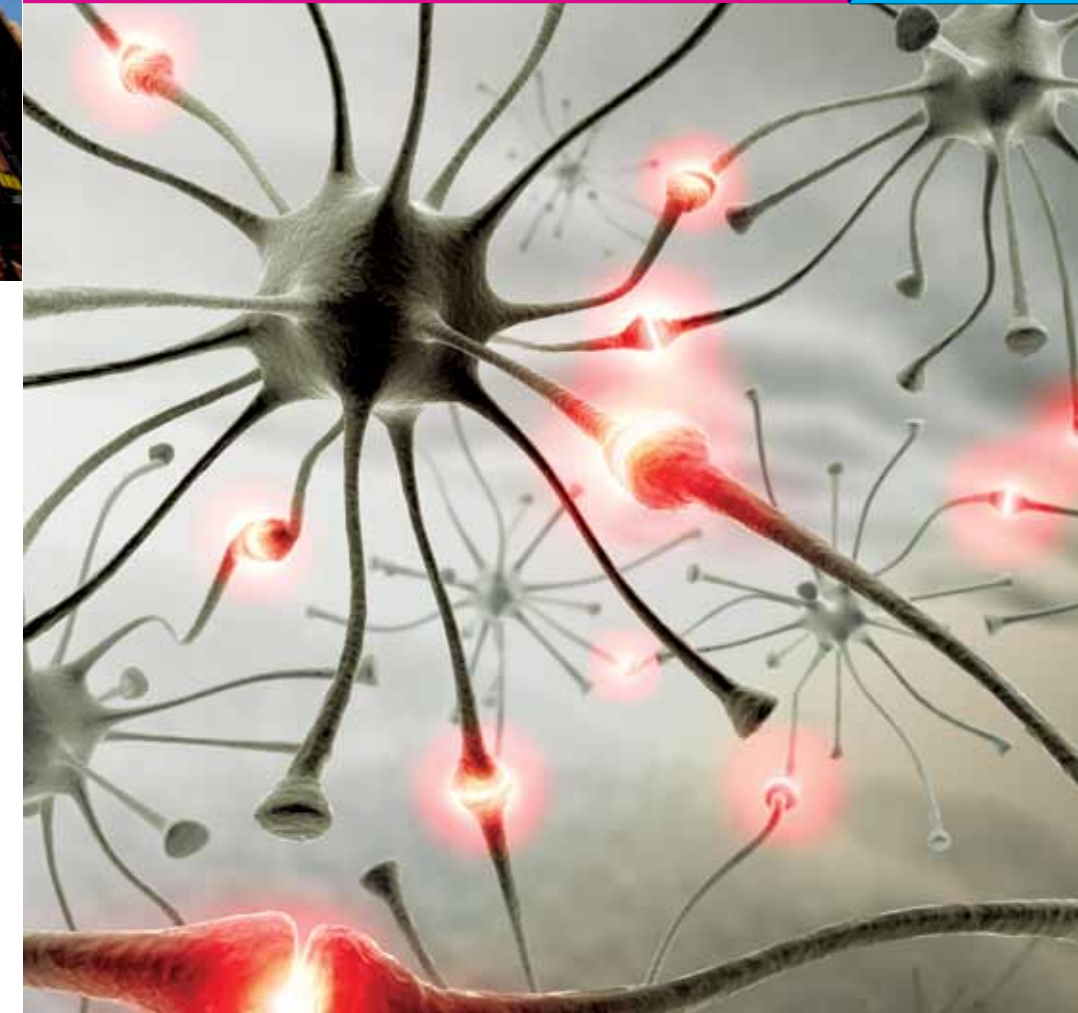
By Subway

Take the L, N, Q, R, 4, 5, or 6 to the 14th Street Station at Union Square.

By Bus

Take the Manhattan buses or any 14th Street bus to Union Square.

ALS Center at Mount Sinai Beth Israel Certified Center of Excellence



What is Amyotrophic Lateral Sclerosis (ALS)?

The ALS Center at Mount Sinai Beth Israel is the first center in Manhattan co-sponsored by The ALS Association of Greater New York.

Also known as Lou Gehrig's Disease for the New York Yankees baseball legend who contracted the illness, **ALS is a rapidly progressive, fatal disease in which the nerve cells (neurons) stop sending messages to the body's voluntary muscles. As a result muscles gradually waste away as they are unable to function. ALS does not affect a person's mind, personality, intelligence, memory or senses. Individuals with ALS do, however, gradually lose their strength and the ability to move their limbs and body, as well as the ability to breathe without ventilation support. The causes of ALS are as yet unknown and there is no cure at this time.**

Diagnosis and Treatment

The main diagnostic test for neuromuscular disorders is a clinical evaluation. However, our department also has expertise in electrophysiological testing of muscles, nerves and their connections and nerve root function.

Although there is no known cure for ALS, new drugs have been approved or are being tested to treat the disease. Additionally, a variety of steps can be taken to alleviate symptoms and improve patients' quality of life, all of which are available at our facilities. Treatment options range from medication to physical therapy to improve and retain function, including occupational, speech, and nutritional therapies.

Finding a Cure

The ALS Center at Mount Sinai Beth Israel is actively involved in ongoing research. We are currently enrolling patients into clinical trials.

For more information about clinical trials contact Emily Ripps at ERipps@chpnet.org

Comprehensive, Coordinated Approach to Patient Care

Our range of clinical services includes:

- Neurology
- Nursing
- Respiratory Therapy
- Physical Therapy
- Occupational Therapy
- Speech Therapy
- Social Work
- Nutrition
- Support Groups
- Research Studies

A weekly multidisciplinary clinic offers a wide range of complex and coordinated care, providing top-notch clinical and support services, and also supports a wealth of data that allows the department to participate in large, multi-center trials of ALS protocols, drugs and supportive care. A monthly ALS support group is held for patients, family members, caregivers and friends.

For more information, please contact: Emily Ripps, RN 212-844-6188 ERipps@chpnet.org

ALS Center Staff



Stephen Scelsa, MD
Director, Neuromuscular Disease and The ALS Center
Mirken Department of Neurology,
Mount Sinai Beth Israel



Daniel MacGowan, MD
Associate Director,
Neuromuscular Disease and The ALS Center
Mirken Department of Neurology,
Mount Sinai Beth Israel

Our care team consists of:

- Clinical Coordinator
- Speech Pathologist
- Occupational Therapist
- Registered Dietician
- Physical Therapist
- Respiratory Therapist
- Volunteer & Support Group Facilitator
- Social Worker



**Mount
Sinai
Beth Israel**